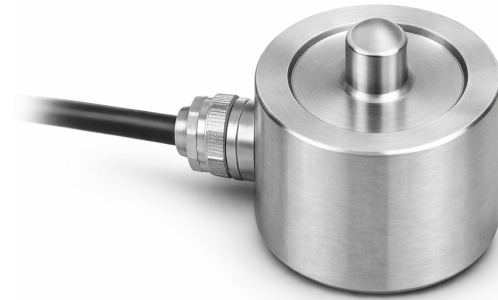


# Button Load Cell

Compact Compression Force Measurement



## Product Overview

JRAGRAU Button Load Cells are compact strain-gauge based force sensors designed for accurate compression force measurement where space constraints exist. Their robust cylindrical construction ensures stable output, high reliability, and repeatable performance in industrial and laboratory applications.

## Key Features

- Compact, low-profile design
- High accuracy compression measurement
- Suitable for integration into confined assemblies
- Robust alloy steel construction
- Reliable performance under cyclic loading

## Technical Specifications

Capacity Range	1 kg, 2 kg & 5 kg
Rated Output	2.0 mV/V $\pm 0.004$
Accuracy Class	C2
Max. Verification Intervals	2000
Combined Error	$< \pm 0.030$ %RO
Creep	0.05 %RO / 30 min
Temp. Effect on Sensitivity	0.0017 %RO / °C
Temp. Effect on Zero	0.05 %RO / °C
Zero Balance	$\pm 1.0$ %RO
Input Resistance	725 $\Omega$ $\pm 5$ $\Omega$
Output Resistance	700 $\Omega$ $\pm 5$ $\Omega$
Insulation Resistance	5000 M $\Omega$ (50 V)
Recommended Excitation	5–12 V
Compensated Temp. Range	-10 °C to +40 °C
Operating Temp. Range	-30 °C to +80 °C
Safe Overload	150 %RO
Ultimate Overload	200 %RO
Material	Alloy Steel / Stainless Steel

## Applications

- Force measurement in presses and fixtures
- Assembly force monitoring
- Laboratory testing setups
- Automation and robotics systems